



THE SINGULAR SPACE
EXTRAORDINARY PROPERTIES



**Unique country home set in rolling
countryside. Toledo**

Ref. S14

A welcoming and unique country home boasting ravishing mountain views in Toledo's Tiétar Valley and just one and a half hours from Madrid – Country home - Toledo.

4 habitaciones

3 baños

150 m² de superficie

1.7 Ha de terreno

A welcoming country home set in extensive grounds, benefiting from an idyllic setting, a panoramic outlook across the Tiétar Valley to the Sierra de Gredos and easy access to local shops and services, just one and a half hours from Madrid.

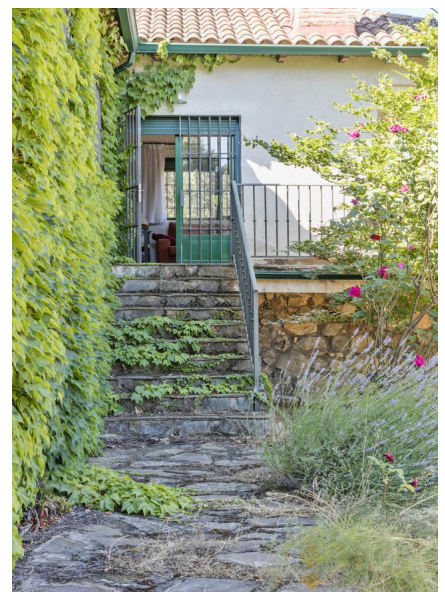
A welcoming country home set in extensive grounds, benefiting from an idyllic setting, a panoramic outlook across the Tiétar Valley to the Sierra de Gredos.

Huddled against the valley side, this unique country home was built in 2003 and incorporates some first-rate materials and finishes. Externally, the design seeks to complement the traditional architecture of the area, while the interior sports solid wood doors and built-in wardrobes, stone-tiled floors with black grouting and coated aluminium shutters with a smart green finish. Clearly well cared for, the property is presented in walk-in condition with all utilities.

The accommodation is arranged on a single floor and comprises a spacious living-dining room with working fireplace, kitchen, four bedrooms, two bathrooms, storage room and firewood store. Three generous terraces fan out from the house to offer versatile space for al fresco dining, entertaining or sunbathing with a blissfully peaceful outlook.

Immediately adjacent to the house is a covered car port with space for two vehicles. There is also an annex with its own private entrance and bathroom, which would make a cosy den, games room or guest house.

The surrounding grounds enchant even before we catch sight of the ravishing mountain views. Strolling through the 17,000 m² of meadow and woodland, it's a challenge to count the 300+ holm oak, juniper and other native trees that pepper the landscape. Crucially, the estate fronts onto legally protected land – so no risk of those spectacular vistas being spoiled by encroaching development.



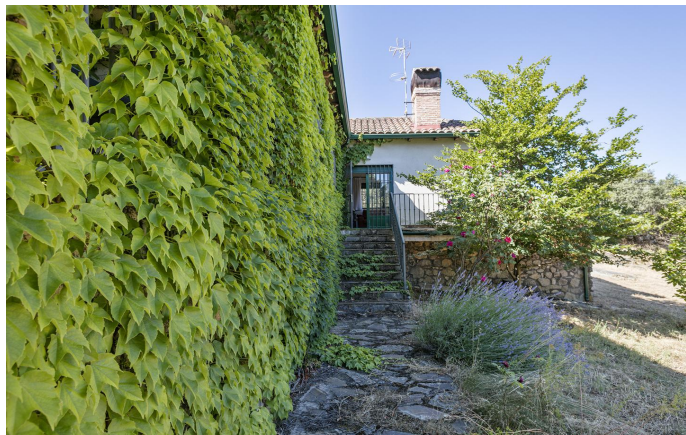
Contacto

C/Julián Camarillo, 47 B203
28037 Madrid
+91 388 97 74 / +34 630 344 539
hello@thesingular.space



THE SINGULAR SPACE

EXTRAORDINARY PROPERTIES

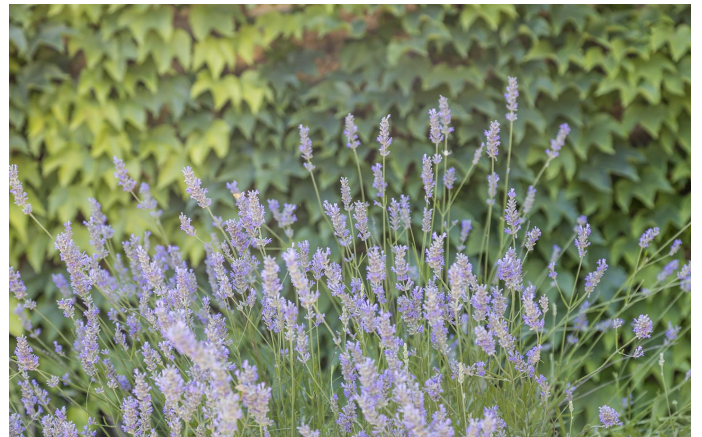


Contacto

C/Julián Camarillo, 47 B203
28037 Madrid
+91 388 97 74 / +34 630 344 539
hello@thesingular.space



THE SINGULAR SPACE
EXTRAORDINARY PROPERTIES





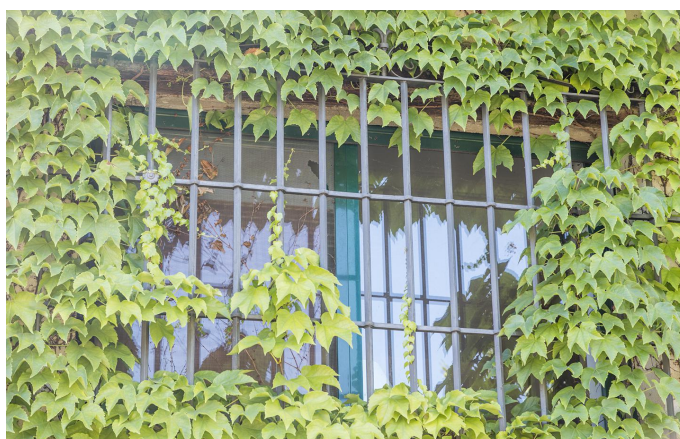
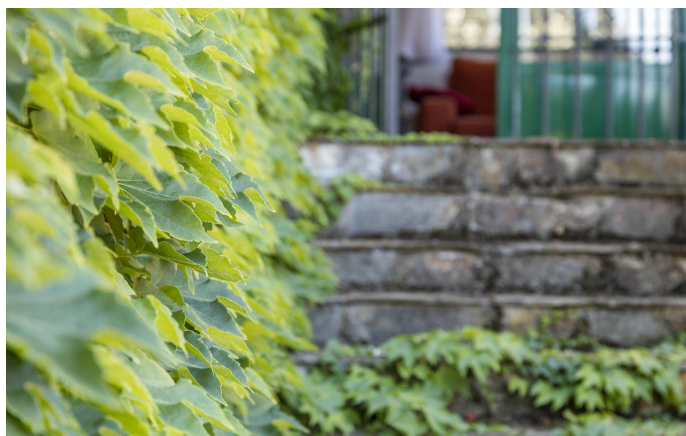
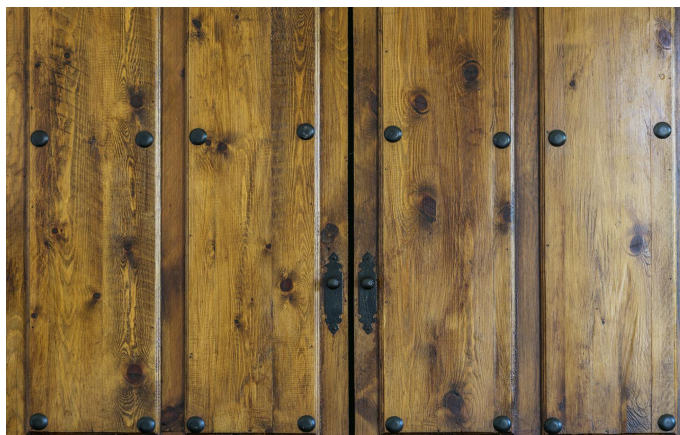
THE SINGULAR SPACE
EXTRAORDINARY PROPERTIES





THE SINGULAR SPACE

EXTRAORDINARY PROPERTIES



Contacto

C/Julían Camarillo, 47 B203
28037 Madrid
+91 388 97 74 / +34 630 344 539
hello@thesingular.space



THE SINGULAR SPACE

EXTRAORDINARY PROPERTIES



Contacto

C/Julían Camarillo, 47 B203
28037 Madrid
+91 388 97 74 / +34 630 344 539
hello@thesingular.space