



## THE SINGULAR SPACE

EXTRAORDINARY PROPERTIES



### Extraordinary cortijo in the Sierra Aracena National Park. Huelva Ref. S10

Luxurious 166ha Andalusian farmstead with outbuildings.

**Precio €5.000.000**

**8 habitaciones**

**7 baños**

**800 m<sup>2</sup> de superficie**

**166 Ha de terreno**

Offering a rare opportunity to acquire a fully functioning country estate within easy reach of Seville and some of southern Spain's most enticing natural playgrounds, this extraordinary cortijo located in Huelva has the added appeal of a stunning location inside the Sierra Aracena national park. With the scenic Atlantic coast and at least five golf courses within an hour's drive, it's a perfect match for the discerning outdoor enthusiast.

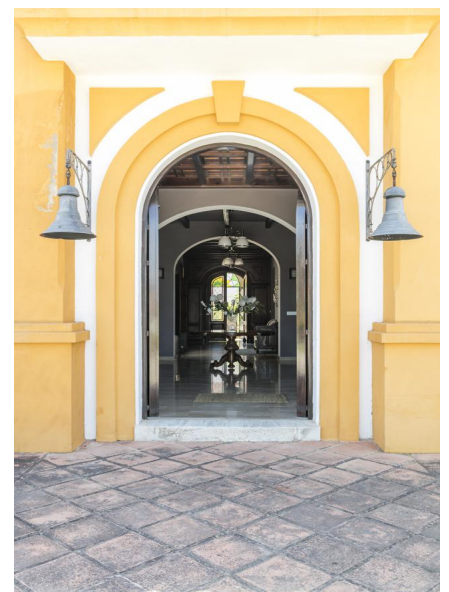
Handsome, luxuriously appointed 166ha Andalusian farmstead with outbuildings and extensive stabling, in a spectacular national park setting, just 30 minutes from Seville.

The house itself, completed in 2004, presents all the comforts of twenty-first century life in a deceptively traditional package. It was built on the footprint of an older house, from which it has inherited some fine stone chimneys and a suite of outbuildings.

Accommodation of 800 m<sup>2</sup> spans two levels wrapped around a central patio, and includes eight en-suite bedrooms, two WCs, a spacious dining room ideal for entertaining and a fitness area complete with sauna and jacuzzi.

The showpieces are undoubtedly the two reception halls, one double height and hosting a library on its chestnut wood and wrought iron balcony. No expense has been spared on the stunning interior, with hardwood features, slate flooring, underfloor heating and beautiful stained glass reclaimed from old Sevillian mansions combining to create an ambience of understated luxury.

Inside the perimeter stone wall of this extraordinary cortijo are landscaped areas, fountains, a swimming pool, a 400 m<sup>2</sup> warehouse, stables with twelve loose boxes and paddock, housekeeper's quarters and outbuildings housing various installations and services.



#### Contacto

C/ Julián Camarillo, 47 B203  
28037 Madrid  
+91 388 97 74 / +34 630 344 539  
hello@thesingular.space



THE SINGULAR SPACE  
EXTRAORDINARY PROPERTIES







THE SINGULAR SPACE

EXTRAORDINARY PROPERTIES



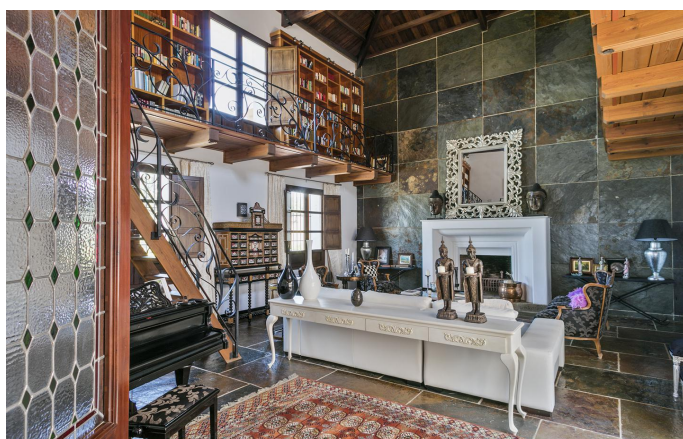
#### Contacto

C/Julían Camarillo, 47 B203  
28037 Madrid  
+91 388 97 74 / +34 630 344 539  
[hello@thesingular.space](mailto:hello@thesingular.space)





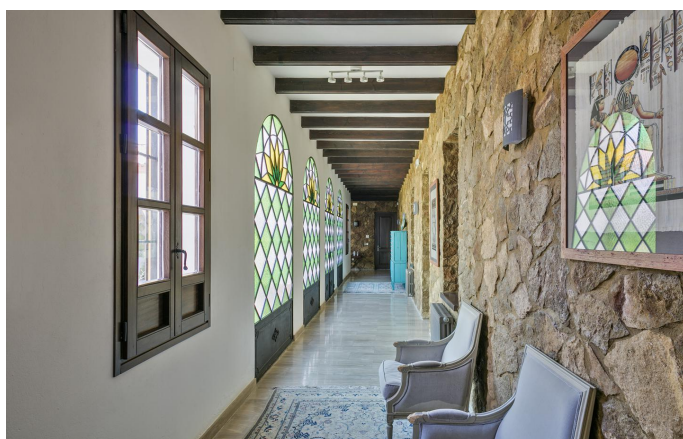
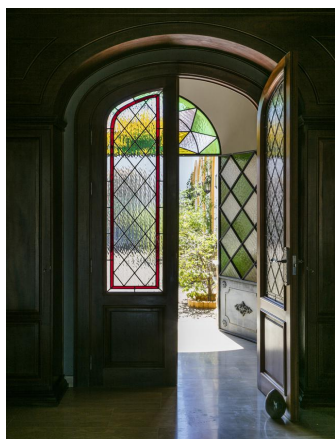
THE SINGULAR SPACE  
EXTRAORDINARY PROPERTIES







THE SINGULAR SPACE  
EXTRAORDINARY PROPERTIES







THE SINGULAR SPACE

EXTRAORDINARY PROPERTIES



#### Contacto

C/Julián Camarillo, 47 B203  
28037 Madrid  
+91 388 97 74 / +34 630 344 539  
[hello@thesingular.space](mailto:hello@thesingular.space)