



THE SINGULAR SPACE

EXTRAORDINARY PROPERTIES



**A ravishing Modernist property
unlike any you've seen before.**

Girona

Ref. S110

Set in the stunning surroundings of the Aiguamolls de l'Empordà Natural Park, nestled in the gentle curves of the Muga and Fluvià rivers.

13 habitaciones

8 baños

2.760 m² de superficie

91 Ha de terreno

The property spans an area of approximately 2,700 sqm, including a hayloft, courtyard and the original cortal (medieval castle) abutting the Modernist addition, built to a rectangular plan with three gatehouses and eye-catching tower. The grounds included extend to over 6ha (and possibly to over 10ha).

This spectacular country mansion is a unique find, a ravishing example of Modernist architecture lovingly preserved since 1903. It's attributed to the renowned architect Josep Azemar i Pont, who designed both the house that would become famous as Salvador Dalí's birthplace and the Teatre Municipal de l'Escorxador in Lleida, a cherished part of the architectural heritage of Figueras and a fine example of Catalan Modernism.

As we pass through the main entrance, we are greeted by an ample lobby with a ceramic tile frieze and a large stained-glass door in the Modernist style, representing the native flora of the region.

Next, we pass through five spacious reception rooms, most notably an elegant and light-filled ballroom measuring 50 sqm with views of the central courtyard, fireplace and exquisitely crafted detailing in wood, tile and iron. The music anteroom with its tall windows is accessed directly from the entrance lobby, while the main music room, at some 30 sqm a stately affair dedicated to cultivated leisure, reveals a stunning fireplace, wooden floor and a frieze carved with a floral motif.

The sunny kitchen (20 sqm) preserves its period forged-iron stove as well as a feature fireplace.

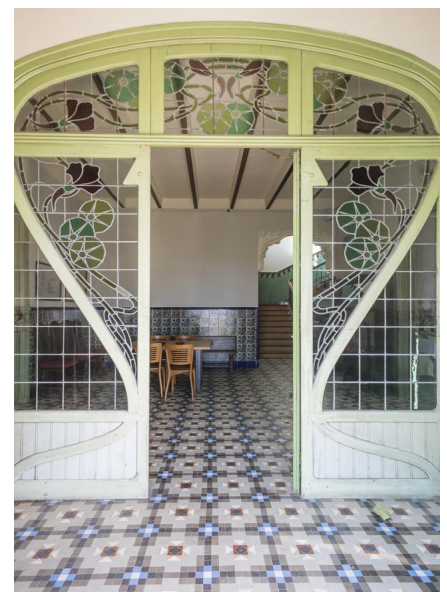
A broad staircase lit by oversized stained-glass windows sweeps us to the upper floors with their 13 double bedrooms - five with private balcony - eight bathrooms and three terraces (two on the first floor and one on the second).

Be sure to look out for the little chapel, built in 1557 and roofed in Arabic tile.

The property also features a lift, utility room, boiler room, workshop area and several garages.

Most of the surrounding land is protected as part of the natural park. The property's own grounds are delightfully varied, encompassing kitchen gardens, banana groves and operational dry-farming areas. If you ever feel the need to rejoin the outside world, nearby towns offer a range of restaurants and leisure and cultural activities, with something to enjoy at every time of year.

You're also just five minutes from the pristine sands of Ca'n Comas beach and a half-hour drive from the towns of Cadaqués, Roses, La Escala and Begur.



Contacto

C/ Julián Camarillo, 47 B203
28037 Madrid
+91 388 97 74 / +34 630 344 539
hello@thesingular.space



THE SINGULAR SPACE
EXTRAORDINARY PROPERTIES





THE SINGULAR SPACE
EXTRAORDINARY PROPERTIES





THE SINGULAR SPACE
EXTRAORDINARY PROPERTIES





THE SINGULAR SPACE
EXTRAORDINARY PROPERTIES

