



THE SINGULAR SPACE
EXTRAORDINARY PROPERTIES



An idyllic home in Aragón. Huesca
Ref. SI26

Sumptuously spacious property with a rustic feel set on a large plot and in an unbeatable location.

7 habitaciones
2 baños
720 m² de superficie
4.030 m² de terreno

This rectangular-shaped property dates back to the 18th century and features the typical stone architecture of High Aragón.

Your dreams of a new life in the country surrounded by loved ones could be about to come true, thanks to this fabulous property brimming with historical character.

The home's impressive dimensions of around 720 sqm of built accommodation, distributed across three floors plus an attic, offer a vast array of different ways to employ and enjoy the space.

A rustic, cobbled entrance patio gives access to the ground floor, which houses the stabling, wood-burning oven, cellar and a comfortably-sized outdoor porch and patio area. On the first floor are a spacious lounge-diner, kitchen, and living area with a rustic, open woodburner, as well as a bright, pleasant space for summer dining, five bedrooms and two bathrooms. The second floor offers a huge, open-plan space which would be perfect for conversion to a living room or games room, the old granary, two small bedrooms and the pantry and fireplace areas. At the top of the property is an unfinished attic space with windows.

Another advantage of this roomy country estate is a two-storey annexed building which would be perfect for conversion to a self-contained guest apartment.

Equally as compelling are the expansive, 4,000 sqm grounds complete with an orchard area, offering the perfect space to relax in the fresh air, as well as abundant potential to expand the property.

Extraordinarily located in a haven of nature and tranquillity at the foot of the breathtaking Pyrenees, the property stands in a small town near Sabiñánigo, just 20 minutes from Jaca, Biescas and the Tena Valley. Just over 30 minutes from the Ordesa y Monte Perdido National Park, a UNESCO World Heritage Site, and only 40 minutes from Formigal-Panticosa and Candanchú ski resorts.

Move in to this diamond in the rough, and watch your dreams come true.



Contacto

C/ Julián Camarillo, 47 B203
28037 Madrid
+91 388 97 74 / +34 630 344 539
hello@thesingular.space



THE SINGULAR SPACE

EXTRAORDINARY PROPERTIES



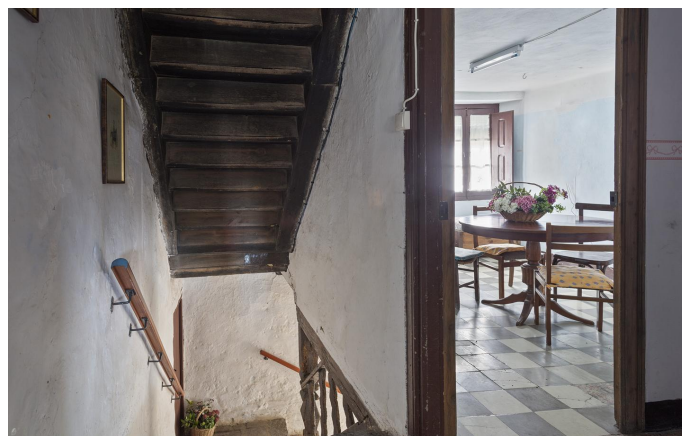
Contacto

C/ Julián Camarillo, 47 B203
28037 Madrid
+91 388 97 74 / +34 630 344 539
hello@thesingular.space



THE SINGULAR SPACE

EXTRAORDINARY PROPERTIES



Contacto

C/Julián Camarillo, 47 B203
28037 Madrid
+91 388 97 74 / +34 630 344 539
hello@thesingular.space

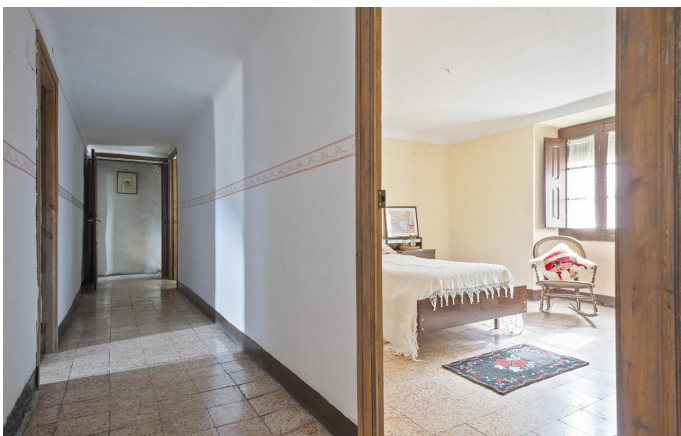


THE SINGULAR SPACE
EXTRAORDINARY PROPERTIES





THE SINGULAR SPACE
EXTRAORDINARY PROPERTIES





THE SINGULAR SPACE
EXTRAORDINARY PROPERTIES





THE SINGULAR SPACE
EXTRAORDINARY PROPERTIES





THE SINGULAR SPACE

EXTRAORDINARY PROPERTIES



Contacto

C/Julían Camarillo, 47 B203
28037 Madrid
+91 388 97 74 / +34 630 344 539
hello@thesingular.space