



THE SINGULAR SPACE
EXTRAORDINARY PROPERTIES



A dazzling property with a sleek design and stunning landscapes.

Cantabria

Ref. S143

A showstopper of a property set against a breathtaking backdrop.

5 habitaciones

4 baños

400 m² de superficie

8.400 m² de terreno

This property strikes the perfect balance with its surroundings, with an eye-catching design and a flawless union between the inside and outside spaces.

A striking architectural feat, this spectacular home offers dramatic, panoramic views of the extraordinary surrounding landscape and is set within easy reach of Santander and its idyllic beaches.

Distributed across two sweeping open-plan floors, the property boasts a living area, a magnificent kitchen, 5 bedrooms and 4 bathrooms.

It is set on a beautiful plot of land spanning an impressive 8,400 sqm, and the 17x4 metre pool enhances the property's sleek aesthetic.

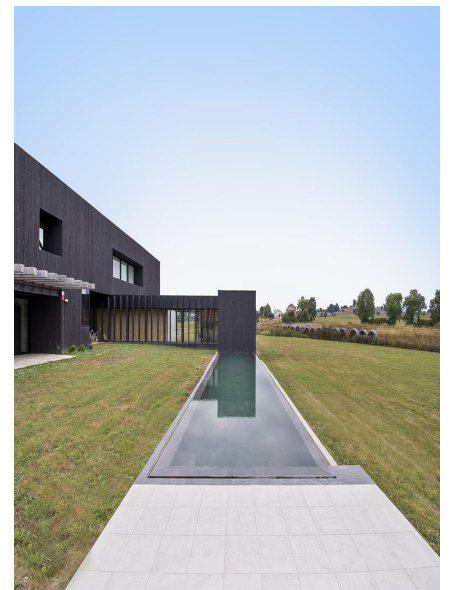
Three covered porches face in three different directions, offering the right outdoor space for any time of day.

The exquisitely-selected construction materials include striking oak floors and walls, the concrete cavity wall façade, and Siberian Larch timber treated using the Japanese wood charring technique.

The property doesn't disappoint on location either; it is just 10 minutes from the elegant city of Santander and its airport, and 45 minutes from Bilbao Airport. The balmy beaches of Somo and Loreda are 10 minutes away, as is the Pedreña golf course, and the property enjoys direct highway access.

One look at the sensational views and great privacy afforded by the property and it will be love at first sight.

This is your chance to live in a true work of art. Don't let it pass you by.

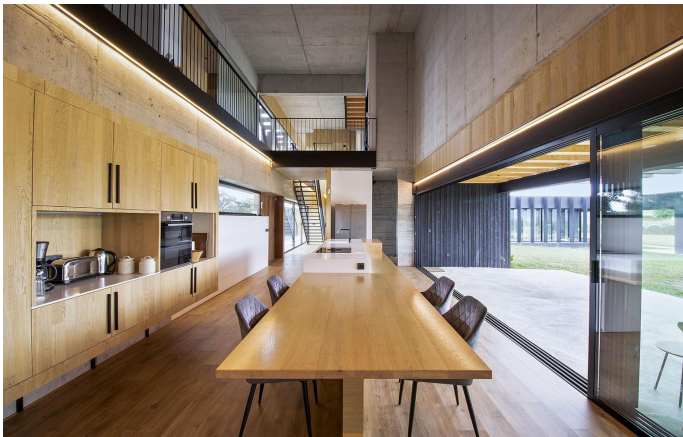


Contacto

C/Julían Camarillo, 47 B203
28037 Madrid
+91 388 97 74 / +34 630 344 539
hello@thesingular.space



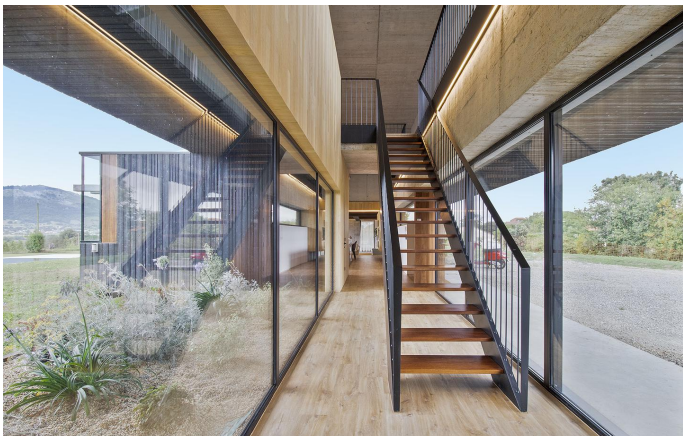
THE SINGULAR SPACE
EXTRAORDINARY PROPERTIES





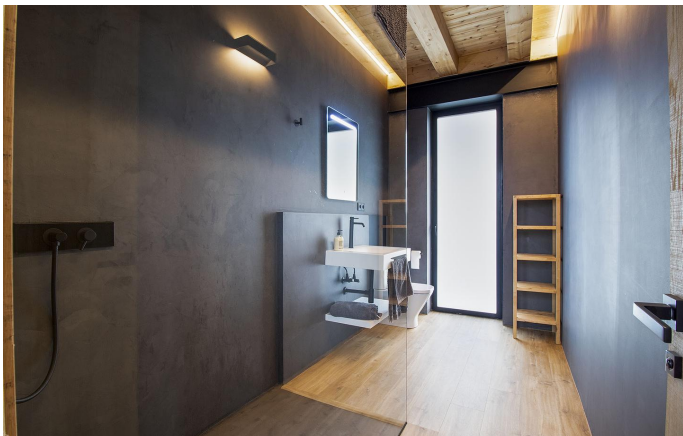
THE SINGULAR SPACE

EXTRAORDINARY PROPERTIES





THE SINGULAR SPACE
EXTRAORDINARY PROPERTIES





THE SINGULAR SPACE

EXTRAORDINARY PROPERTIES

