



THE SINGULAR SPACE

EXTRAORDINARY PROPERTIES



Extraordinary estate with charming home in Mancha Conquense.

Cuenca

Ref. S149

Like new, includes pool and a 2,3ha estate.

Precio €795.000

3 habitaciones

3 baños

759 m² de superficie

2.3 Ha de terreno

The Mancha Conquense region's rich heritage and natural landscape make it an unbeatable location. Vast open plains as far as the eye can see, dotted with fortresses, windmills and several stunning inland lagoons. Just two hours from Madrid and an hour from picturesque Cuenca.

The estate comprises various buildings with a total built floor space of 759 sqm on a 2.3 hectare plot. The two-storey main residence is crafted in quality materials, including wooden ceilings throughout, flooring in stone from the local region and rustic brickwork.

The front of the house is graced by a huge, 90 sqm covered porch. Once inside, the hall opens directly onto the first living-dining area, leading through to two fully-fitted kitchens, two bedrooms - the master bedroom is en-suite - another bathroom, under-stair storage and a second living area spanning a roomy 80 sqm. This floor also affords access to the garage, laundry area, pantry and machine room.

Upstairs is a totally open-plan first floor that could be fully adapted to suit the needs of the new owner; office space, perhaps, or another living room, games room or even a home cinema. The space is divided by a central staircase and also features a third bathroom and a large open-air terrace.

Outside is a lovely pool area with plenty of space for sunbathing and its own separate machine room, another storage area and woodshed, a covered barbecue, a kids' play area with a wendy house, swings and a slide, and seven kennels.

The estate is fully enclosed with various access points, and is brimming with more than 500 trees, including walnut trees, olive trees, conifers and ornamental trees.

Half of the house is heated with underfloor heating and the rest with open wood-burning fireplaces. Municipal water supply and electricity from the national grid. There are lampposts inside the estate and public lighting on the access road.

This is an extraordinary opportunity to make memories with friends and family and enjoy a truly unique landscape.



Contacto

C/Julían Camarillo, 47 B203
28037 Madrid
+91 388 97 74 / +34 630 344 539
hello@thesingular.space

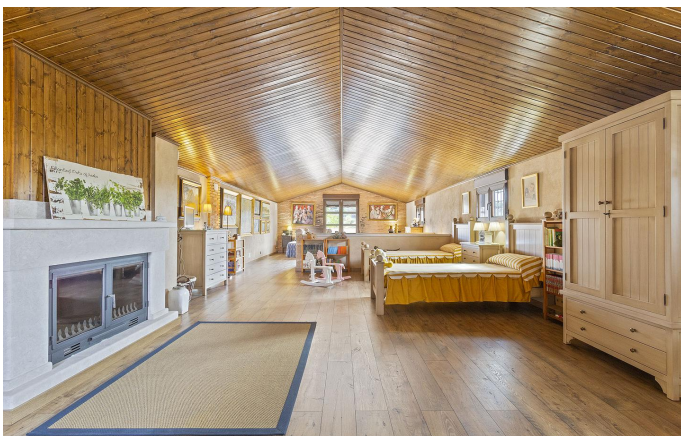


THE SINGULAR SPACE
EXTRAORDINARY PROPERTIES



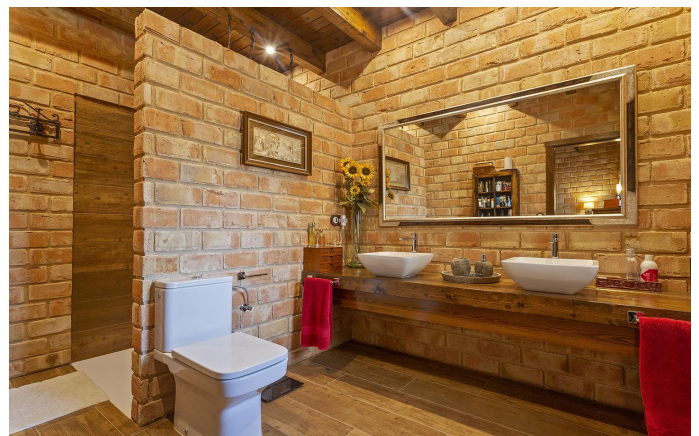


THE SINGULAR SPACE
EXTRAORDINARY PROPERTIES





THE SINGULAR SPACE
EXTRAORDINARY PROPERTIES





THE SINGULAR SPACE

EXTRAORDINARY PROPERTIES



Contacto

C/Julían Camarillo, 47 B203
28037 Madrid
+91 388 97 74 / +34 630 344 539
hello@thesingular.space