



THE SINGULAR SPACE

EXTRAORDINARY PROPERTIES



Extraordinary estate on the banks of the Eresma river. Valladolid

Ref. S170

An exceptional, spacious complex on a beautiful estate in an excellent location.

7 habitaciones
12 baños
3.420 m² de superficie
78 Ha de terreno

The property boasts a wonderful riverside location and sweeping gardens with automatic irrigation and its very own pond. Part of the estate is given to stone pine woods and another is suitable for agriculture .

Surrounded by nature and flanked by the Eresma river is this spectacular estate, set on 78 hectares of land and over 3,400 sqm of floor space.

The 500 sqm single-storey property has been fully refurbished using only the finest quality materials, featuring a spacious living room with a fireplace, two kitchen areas, four en-suite bedrooms in the main building, plus a guest house and keeper's cottage.

A former dovecote has been re-purposed as a small church.

The estate spans 2,500 sqm in single-storey, open-plan buildings in immaculate condition, which would be ideal for multi-use spaces or venues for events and meetings.

Fully-equipped, cutting-edge facilities with a biomass heating system, water treatment plant using a pump from the river, programmable fountain in the pond and an automatic irrigation system in the gardens.

The estate is fully enclosed with an automatic access gate.

The access road is in good condition.

The estate is located just 150 km outside Madrid, 15 km from Olmedo and 30 km from Valladolid, near the AVE high-speed train station.

It offers complete independence and privacy with stunning riverside views.

Don't miss this excellent opportunity to create either the home of your dreams or a thriving hotel or events venue.



Contacto

C/ Julián Camarillo, 47 B203
28037 Madrid
+91 388 97 74 / +34 630 344 539
hello@thesingular.space



THE SINGULAR SPACE

EXTRAORDINARY PROPERTIES

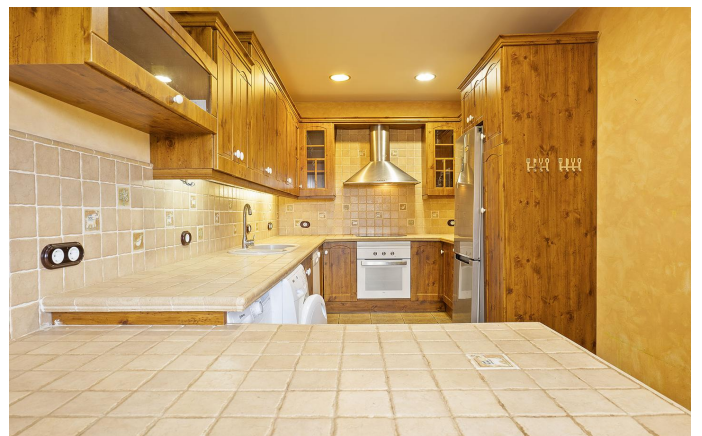
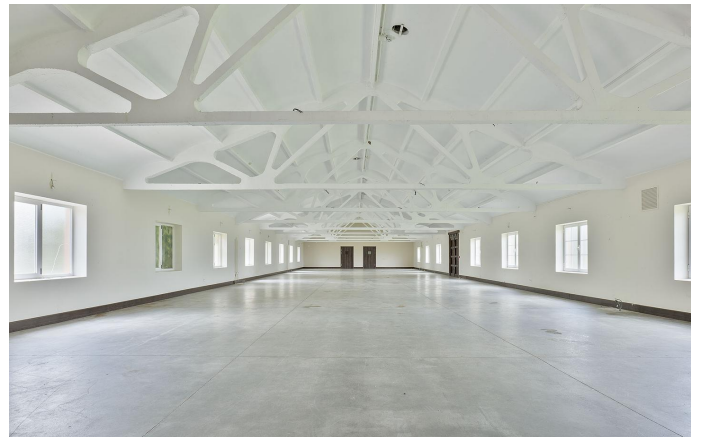


Contacto

C/ Julián Camarillo, 47 B203
28037 Madrid
+91 388 97 74 / +34 630 344 539
hello@thesingular.space

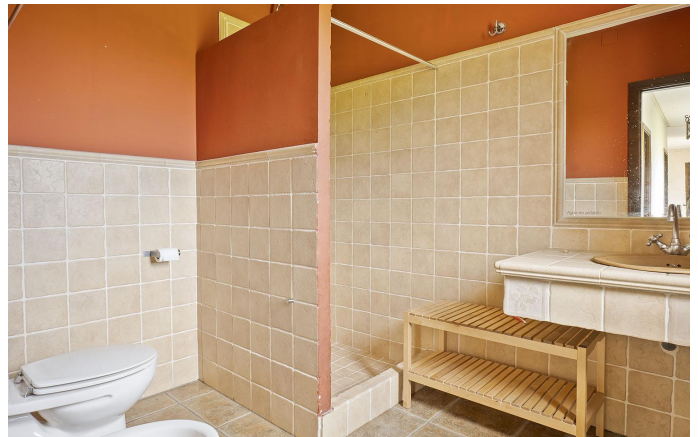


THE SINGULAR SPACE
EXTRAORDINARY PROPERTIES





THE SINGULAR SPACE
EXTRAORDINARY PROPERTIES





THE SINGULAR SPACE
EXTRAORDINARY PROPERTIES





THE SINGULAR SPACE
EXTRAORDINARY PROPERTIES





THE SINGULAR SPACE

EXTRAORDINARY PROPERTIES



Contacto

C/Julían Camarillo, 47 B203
28037 Madrid
+91 388 97 74 / +34 630 344 539
hello@thesingular.space