



THE SINGULAR SPACE  
EXTRAORDINARY PROPERTIES



**Delightfully different family home  
with garden just outside Oviedo.**

**Asturias**

**Ref. S172**

A little piece of Asturian paradise on the banks of the River Nalón.

**3 habitaciones**

**2 baños**

**206 m<sup>2</sup> de superficie**

**1.574 m<sup>2</sup> de terreno**

This exquisite home was built in 1911 with the fortune amassed in Cuba by its enterprising Spanish owner. With its ornate galleries, cast iron columns and romantic balconies, it's a perfect example of the unique indiano style, inspired by the domestic architecture of the New World.

An impeccable fusion of architectural heritage and contemporary living, this remarkable home offers open, light-filled spaces and attractive gardens.

Somewhat unusually for the indiano period, the property is largely stone built (with a wall thickness of 70 cm), giving it a solidity lacking in many of its contemporaries.

The house was completely remodelled in 2009, with sensitive structural alterations that create an airy, modern layout while preserving its wealth of period charms.

The refurbishment introduced a palette of fine materials, including solid hardwoods and beautiful oak floors. Roof insulation and Climait windows with safety glass were also installed at this time.

Accommodation is arranged over three floors, with a combined area of 206 sqm:

The ground floor comprises a spacious, open-plan living area, bedroom, well-appointed kitchen with direct access to the garden and a full bathroom with bathtub.

On the first floor, we find a stunning sitting room extending to 76 sqm, gloriously illuminated by magnificent iron-framed windows.

The second floor contains a versatile central living area, a bedroom with full ensuite and one further open bedroom.

The layout would also lend itself to more independent spaces – four separate ensuite bedrooms could easily be created with a few simple adaptations.

Offering a generous swathe of outdoor space, the property's two gardens are another huge point in its favour. The largest (932 sqm) is enclosed by traditional stone walls and flourishing hedging shrubs and features olive trees, a beautiful fig tree and night lighting – the perfect place to relax and recharge.

The smaller garden (651 sqm) runs down to the River Nalón, and is separated from the house by a rural road, forming a peaceful refuge from the bustle of family life.

Additional outdoor space is provided by two patios, one formed by the loggia beneath the windowed gallery. Two ancillary structures serve as a storage unit and boiler room respectively.

An outdoor parking area is a convenient bonus.

The property is heated by a diesel-fired boiler feeding cast iron radiators and a latest-generation pellet stove with classic styling.



**Contacto**

C/ Julián Camarillo, 47 B203

28037 Madrid

+91 388 97 74 / +34 630 344 539

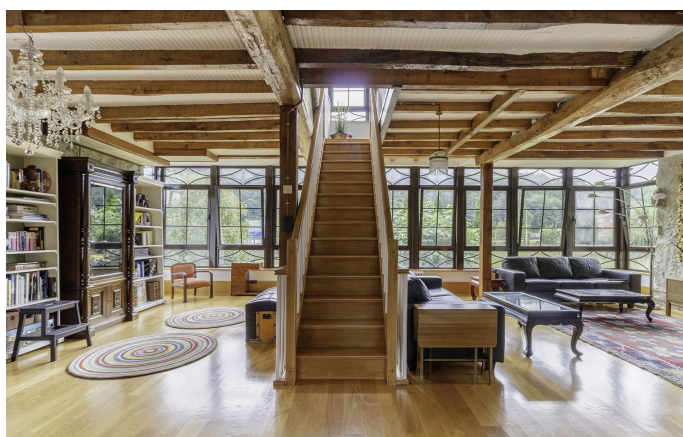
hello@thesingular.space





# THE SINGULAR SPACE

EXTRAORDINARY PROPERTIES







# THE SINGULAR SPACE

EXTRAORDINARY PROPERTIES

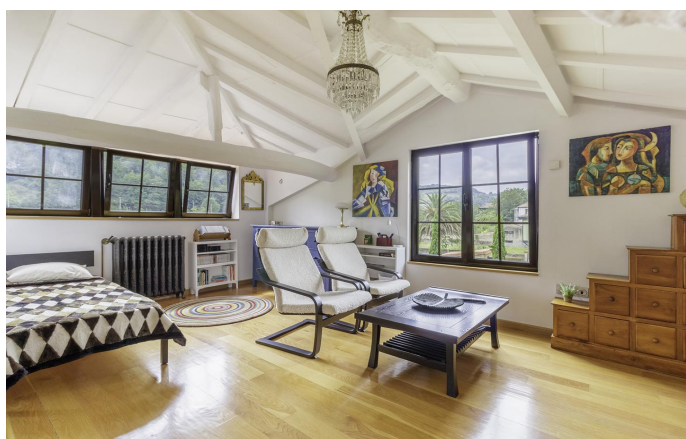






# THE SINGULAR SPACE

EXTRAORDINARY PROPERTIES







# THE SINGULAR SPACE

EXTRAORDINARY PROPERTIES







# THE SINGULAR SPACE

EXTRAORDINARY PROPERTIES







# THE SINGULAR SPACE

EXTRAORDINARY PROPERTIES

