



THE SINGULAR SPACE

EXTRAORDINARY PROPERTIES



An Alpine-Inspired Duplex in the Heart of Ezcaray. La Rioja

Ref. S232

Serene and sophisticated interior architecture inspired by the landscapes of La Rioja.

Precio €365.000
3 habitaciones
3 baños
130 m² de superficie

In the heart of Ezcaray, nestled at the foothills of the Sierra de la Demanda, just minutes from the Valdezcaray ski resort, stands this unique residence: a fully renovated duplex designed by María Acha Interiorismo, located on a landmark street within the historic centre. A home that combines the warmth of mountain architecture with a contemporary, functional and serene design language.

Set in one of La Rioja's most emblematic villages, this meticulously renovated duplex blends the essence of an alpine chalet with the comfort of urban living. A project where light, materials and spatial flow engage in a constant dialogue with the surrounding natural environment.

The project was born from the desire to create a welcoming home with the soul of an alpine chalet, seamlessly integrated into the village's urban fabric. The result is a balanced and timeless residence, where rustic and sophisticated elements coexist, blending local character with a modern sensibility through a meticulous attention to detail.

Inspiration is drawn directly from the landscape that surrounds Ezcaray: the mountains, the vegetation and the ever-changing light throughout the seasons. The home is conceived as a space of wellbeing, where materials, lighting and layout work in harmony to create an atmosphere of calm and a deep connection to nature.

The staircase becomes the central axis of the project and a defining architectural feature. Its metal structure, clad in lacquered wood and oak, extends into a balustrade that descends to the floor, forming wall panelling with alpine-inspired detailing. This element not only structures the space visually, but also discreetly integrates service areas, bringing continuity and order to the overall design. The same language is echoed in the kitchen enclosure, unifying the interiors.

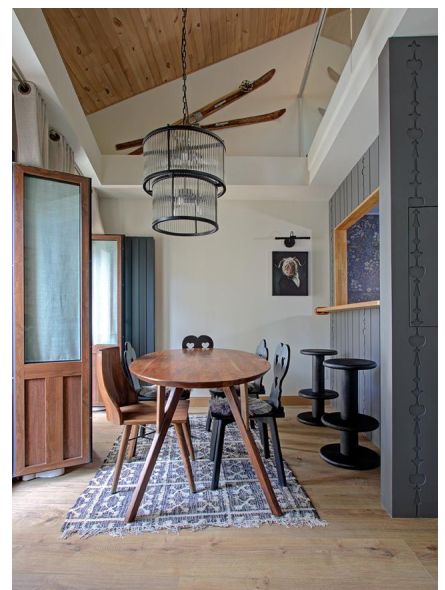
The kitchen is conceived as an autonomous volume—almost a small cabin within the home. Its deep grey lacquered enclosure, combined with oak details, enhances its enveloping character. Inside, botanical-patterned tiles, deep blue cabinetry and ski-shaped handles introduce subtle references to the surrounding landscape and mountain culture, balanced by graphite-toned worktops and finishes.

The home is arranged over two levels with distinct identities. The lower floor, designed to function as a self-contained apartment, offers a more serene and elegant atmosphere, with a restrained palette of neutrals, blues and blacks. The upper floor adopts a lighter, more luminous character, with soft, powdery tones that wrap the bedrooms and a reading corner. This chromatic and material duality shapes the spatial experience of the home.

The living areas unfold as a continuous space of kitchen, dining room and lounge, opening onto the village centre through balconies that bring in light and a sense of urban life. The private areas are oriented towards a quieter setting, with mountain views and spaces designed for rest and intimacy.

With a surface area of approximately 130 sqm, the property offers three bedrooms, three bathrooms, two living areas and multiple sources of natural light—balconies, windows and skylights—that bathe the interior and enhance the feeling of openness. A glass balustrade on the upper floor allows light to flow between levels, visually connecting the entire home.

Fully renovated in 2025, the property features perimeter insulation, high-performance triple-glazed windows for both thermal and acoustic efficiency, new installations and a carefully executed construction throughout. It is delivered fully furnished and equipped, ready to move into.

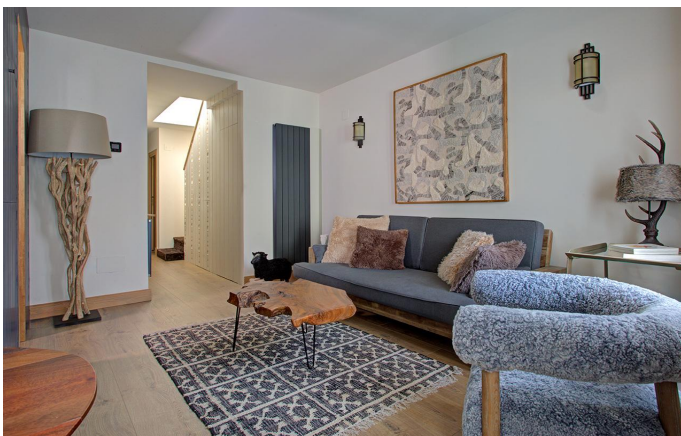


Contacto

C/Julián Camarillo, 47 B203
28037 Madrid
+91 388 97 74 / +34 630 344 539
hello@thesingular.space



THE SINGULAR SPACE
EXTRAORDINARY PROPERTIES





THE SINGULAR SPACE

EXTRAORDINARY PROPERTIES



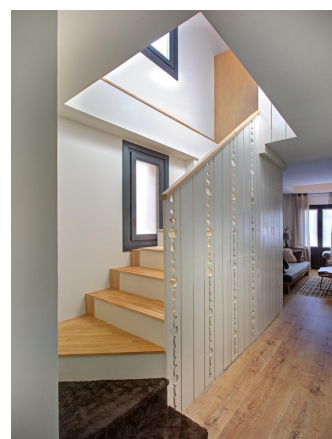
Contacto

C/Julián Camarillo, 47 B203
28037 Madrid
+91 388 97 74 / +34 630 344 539
hello@thesingular.space



THE SINGULAR SPACE

EXTRAORDINARY PROPERTIES

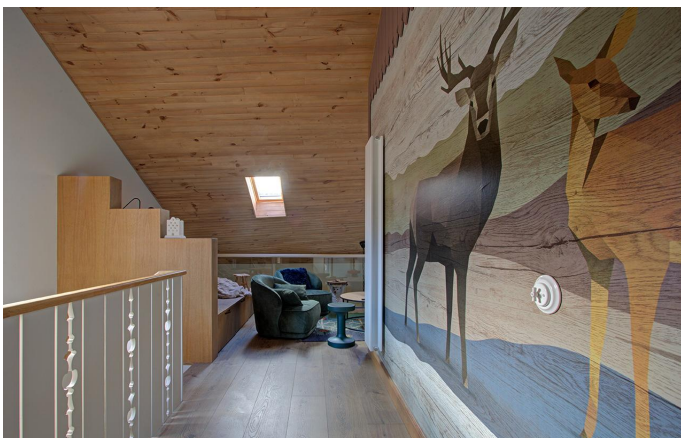


Contacto

C/ Julián Camarillo, 47 B203
28037 Madrid
+91 388 97 74 / +34 630 344 539
hello@thesingular.space



THE SINGULAR SPACE
EXTRAORDINARY PROPERTIES





THE SINGULAR SPACE

EXTRAORDINARY PROPERTIES



Contacto

C/Julían Camarillo, 47 B203
28037 Madrid
+91 388 97 74 / +34 630 344 539
hello@thesingular.space



THE SINGULAR SPACE

EXTRAORDINARY PROPERTIES



Contacto

C/ Julián Camarillo, 47 B203
28037 Madrid
+91 388 97 74 / +34 630 344 539
hello@thesingular.space