



THE SINGULAR SPACE

EXTRAORDINARY PROPERTIES



Enchanting country house in the Sierra Nevada National Park. Granada Ref. S96

Idyllic single-storey property boasting spectacular panoramic views and 12.5 ha of grounds.

Precio €650.000
5 habitaciones
5 baños
423 m² de superficie
12.5 Ha de terreno

The property is built all on one level, extending to a total area of 423 sqm arranged around a charming 127-sqm central courtyard. The walls are constructed from thermal clay blocks, while the exterior is clad in stone taken from the property's grounds. Exterior doors and window frames are crafted from iroko wood and fitted with internal and external shutters. Inside, we find traditional touches like solid oak beams and flooring and handmade terracotta tiles.

This lovely farmstead-style property was designed and built by local architects in 2005, with further work carried out in 2017 to upgrade the roof insulation. Modern, spacious and drenched in natural light, this peaceful home was inspired by the traditional regional vernacular and displays a distinct Moorish influence.

Access to the grounds is through a pair of sturdy wrought-iron gates, opening onto a tree-lined drive that leads up to the house.

An imposing Moorish-style front door leads to an enclosed central courtyard, open to the sky and paved with artisanal clay bricks in a herringbone pattern. At the centre stands a cooling fountain, while four mature olive trees, vines, wisteria and roses provide greenery and shade. A covered cloister hugs the perimeter, supported by wooden pillars.

Inside, there are five bedrooms, all with outward-facing windows. The large (32 sqm) master bedroom features French doors opening onto the terrace and central courtyard. The full bathroom has a freestanding bathtub with cast-iron feet, as well as a shower and bidet. The remaining four bedrooms all have in-built wardrobes and en-suite shower rooms. There's also a generous (16.5 sqm) studio space, utility room and guest WC.

Both the living-dining room (40 sqm) and the kitchen (31 sqm) have doors opening directly to the courtyard and 120-sqm terrace, where we find a charming veranda area shaded by a pergola with climbing wisterias, mature olive trees and lavender. The well-equipped kitchen features granite countertops, double stainless-steel sinks and artisanal tiling.

This well-equipped property enjoys superb internet connectivity and mobile phone coverage both inside and out.

A gas central-heating system with traditional cast-iron radiators is complemented by three woodburning stoves. Hot water is provided by a gas boiler and a large water tank, while a backup generator offers additional reassurance.

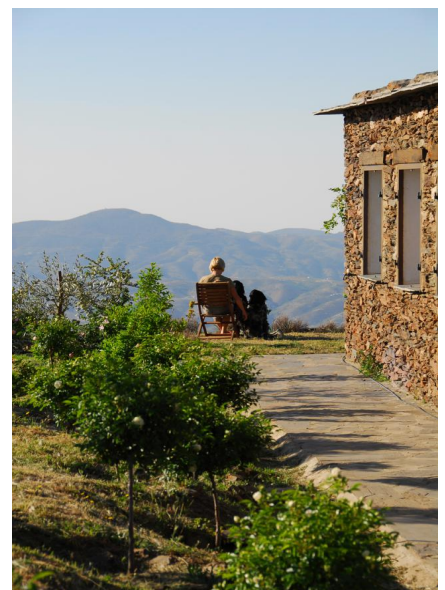
The property is connected to the local water network and also benefits from a seasonal irrigation canal. When in flow, it provides water for the entire hillside and crosses the property in the form of a narrow stream.

Encircling the house are charming Mediterranean-style gravel gardens, planted with rose bushes, fruit (cherry, peach and fig) and walnut trees. Strategically placed solar lighting adds some extra sparkle to evenings under the spectacular starry sky. Beyond the gardens, the grounds are strewn with almond, apple, poplar, holm oak trees, and there's even a young olive grove.

Wherever you stand on this 12.5-hectare plot, you'll be treated to glorious 360° mountain views: north to the snowy peaks of the Sierra Nevada, east to the Sierra de Gádor and south to the Sierra de Contraviesa and the distant Moroccan Rif.

An area of around 3 ha is enclosed by perimeter fencing, two ha of which are either flat or only slightly sloping, making them ideal for growing crops. This very tranquil setting is also perfectly suited for raising animals. An ancillary building with rooftop solar panels provides an excellent opportunity to create a stand-alone workshop.

This extraordinary rural property lies just a few minutes' drive from the nearest village, where you'll find basic services.



Contacto

C/Julián Camarillo, 47 B203
28037 Madrid
+91 388 97 74 / +34 630 344 539
hello@thesingular.space



THE SINGULAR SPACE

EXTRAORDINARY PROPERTIES



Contacto

C/Julían Camarillo, 47 B203
28037 Madrid
+91 388 97 74 / +34 630 344 539
hello@thesingular.space



THE SINGULAR SPACE
EXTRAORDINARY PROPERTIES





THE SINGULAR SPACE
EXTRAORDINARY PROPERTIES



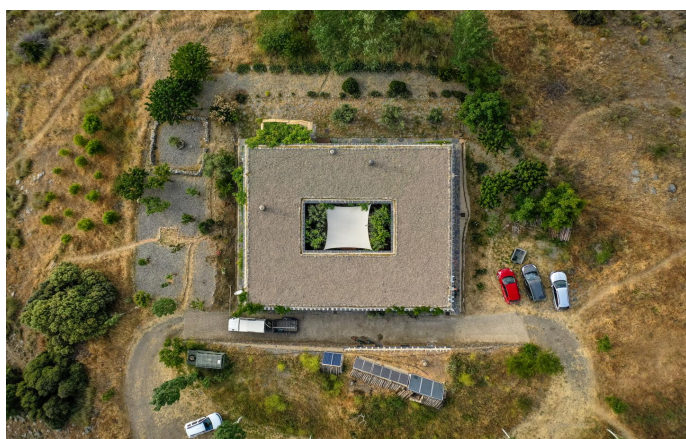


THE SINGULAR SPACE
EXTRAORDINARY PROPERTIES





THE SINGULAR SPACE
EXTRAORDINARY PROPERTIES



Contacto

C/Julían Camarillo, 47 B203
28037 Madrid
+91 388 97 74 / +34 630 344 539
hello@thesingular.space